

.100" × .100" (2.54mm × 2.4mm) Center Low Profile Header For IDC Socket Connectors.

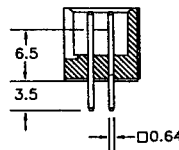
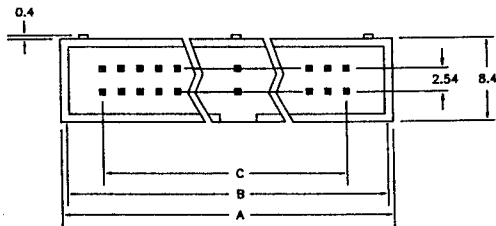
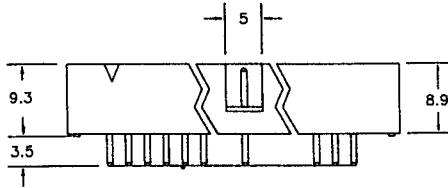
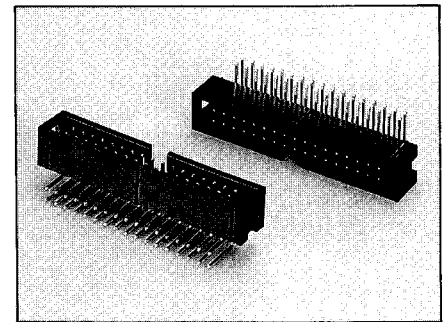
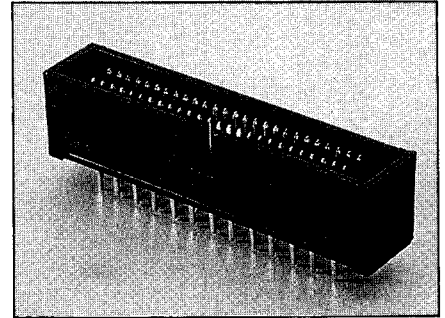
BH Series

Features:

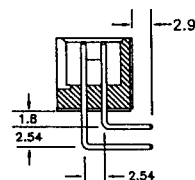
- 10-64 Circuits
- PBT + 30% Glass Fiber (UL 94V-0)
- Low Profile header body helps maximum packaging density
- Available with wrap post tail header
- Fully-shrouded body provides maximum
- Protection for header mating pins

Specifications:

- **Current rating:** 3A AC, DC
- **Voltage rating:** 250V AC, Maximum
- **Temperature range:** -40°C ~ +105°C
- **Contact resistance:** Initial Value/10mΩ max.
After environmental testing/20mΩ max.
- **Insulation resistance:** 1,000 MΩ min
- **Withstand Voltage:** 1500V AC/minute
- **Applicable PC board thickness:** .063" (1.6mm)

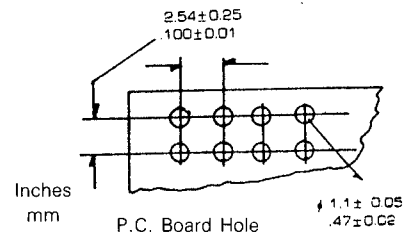


Straight Pins



Right Angle Pins

Position	Dimension		
	A	B	C
BH-10	20.30	18.10	10.16
BH-12	22.84	20.64	12.70
BH-14	25.38	23.18	15.24
BH-16	27.92	25.72	17.76
BH-20	33.00	30.80	22.86
BH-26	40.62	38.42	30.48
BH-30	46.70	43.50	35.56
BH-34	60.78	48.58	40.64
BH-40	58.40	56.20	48.26
BH-50	71.10	68.90	60.96
BH-60	83.80	81.60	73.66
BH-64	88.88	86.68	78.74



Contact Type

- S: Straight
- R: Right Angle